

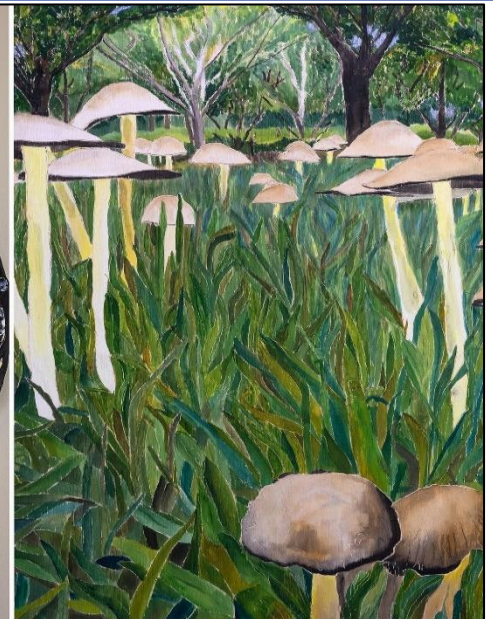


Bright Art Gallery & Cultural Centre WINTER 2023 Newsletter

Welcome to the WINTER edition of the Bright Art Gallery Newsletter – August 2023

IMPORTANT DATES

Wed 27 Sep at 7pm	Opening Spring Exhibitions
Thu 28 Sep – Mon 6 Nov	Spring Exhibitions open 5 days a week Thu to Mon 10am-4pm
Sun 1 Oct at 10am	Official opening Natalie Malseed exhibition <i>In the Orchard</i>
Sun 15 Oct at 10am	Meet the Artist with Carol Stewart, talk and morning tea
Sun 15 Oct at 4.15pm	AGM – members please attend if you can!
Tue 14 Nov – Wed 22 Nov	P12 School Exhibition
Fri 1 Dec at 7pm	Opening Summer Exhibition and Members' Christmas Function
Sat 2 Dec – Mon 29 Jan	Summer Exhibition
Sun 24 Dec – re-open 4 Jan	Christmas break
Wed 27 Mar at 7pm	Opening of the Autumn Art Exhibition
Thu 28 Mar – Sun 12 May 12 noon	Autumn Art Exhibition open 10am-4pm daily



Bright Art Gallery Spring Exhibitions

Natalie Malseed - *In the Orchard*
Jessie Journoud Ryan - *Bits and Pieces*
Carole Stewart - *Out n' About*
Alpine Artists - *New Works*

28/9/23 - 6/11/23

Gallery Hours:
Thur - Mon: 10am - 4 pm

www.brightartgallery.org.au

Ph: 03 5750 1660



2023 Spring Exhibitions

Thu 28 Sep to Mon 6 Nov – open 5 days a week (Thu-Mon) 10am-4pm

Opening Night Wednesday 27 Sep at 7pm – All Welcome

4 Exhibitions: Carol Stewart *Out 'n' About*, Natalie Malseed *In the Orchard*,
Jessie Yvette Journoud-Ryan *Bits & Pieces*, Alpine Artists *New Works*

Carol Stewart *Out 'n' About*

Carol will be exhibiting in the Enid West gallery. Subject matter for her oil paintings, in Impressionist/Realism style, is Landscapes, Seascapes, Streetscapes, Still Life, Flowers and Animals and Birds.



Wagga Wagga artist Carol Stewart has been painting for over 30 years. She is a qualified sign writer and interior decorator.

She teaches art at her homebased studio. Carol has won several awards throughout NSW. She is a sought-after judge and has works in Australian and international private collections.

Proteas This beautiful oil is the Spring Exhibitions raffle prize, donated by Carol.



Apart from opening

night and being on duty at the gallery on many weekends, it's possible to meet Carol at a 'Meet the artist' with a morning tea provided on Sun 15 Oct at 10am.

Natalie Malseed *In the Orchard*

Natalie will hold an Official opening on Sunday 1 October at 10am, as many of her invited guests won't be able to attend on Wednesday evening. Trevor Ranford, representing Chestnuts Australia will open the exhibition. Morning tea provided and all welcome!



In the Orchard – The Edda Beauchesne Gallery upstairs will feature an immersive exhibition inspired by the microhabitat of a chestnut farm. Natalie Malseed works in a range of mediums, telling a story through sculpture, carved board, watercolour paintings and prints. The intention to link Art with Farming is clear.

"My hope is to create a conversation, while offering an insight into life on a chestnut farm. While working with the Australian Chestnut Association, I have visited many chestnut farms in the Alpine region. Visiting these farms has been a gift, allowing me to immerse myself in the orchards, surrounded by all the trees, mushrooms, lichens and



insects. This has brought me so much joy. It's this feeling I hope to share through my exhibition."

Natalie will be on duty at the gallery regularly and will possibly hold workshops. This is to be confirmed.

Jessie Yvette Journoud-Ryan *Bits & Pieces*

Bits & Pieces is a collection of work focusing on selected birdlife in the Dandenong Ranges. From Superb Fairy Wrens in her garden to Australasian Darter Birds (*Anhinga*) observed and sketched at a local nature Reserve - *Birdsland* - in the Dandenong Ranges. This collection of wall sculptures - created with ceramics and crockery, often donated by the local community, or discarded treasures found in local op shops and antique warehouses - reflect somewhat an embarrassment of riches and pay tribute to nature...

the very thing that our consumerist propensity to 'stuff' threatens in our day and age.





Jessie Yvette Journoud-Ryan's sculptural use of repurposed ceramics and vintage crockery draws from a decade of Fine Arts training in Melbourne and an education in ceramics in France. Residing in Dijon as a teenager and being creatively driven, she pursued a Fine Arts pathway and attended a National Ceramics school in rural Burgundy, specialising in the traditional decorative arts of ceramic painting. As a French-Australian artist and Fine Arts educated on both shores



- her work also reflects personal narratives of migration, belonging and cultural heritage. While the choice of medium and crockery reflect the artist's European heritage, the subject matter is a response to her natural surroundings and home in the Dandenong Ranges.

Alpine Artists New Works

An Exhibition of Works, not previously shown in the Bright Art Gallery by the Artist Members of the Gallery, **Painters, Photographers and Artisans**, in the John Masciorini Gallery.

Entry forms must be in by 18 September. Delivery Fri 22 and Sat 23rd September 10am-12.

Entry forms can be downloaded from: <https://www.brightartgallery.org.au/spring-exhibition-2023/>

President's Prattle

Spring is certainly in the air! Daffodils and wattles are blooming everywhere in swathes of yellow and buds and blossoms are on many trees. Won't be long before we are dodging Malicious Magpies and Pesky Plovers!

Pauline and I have just returned from a trip up north, which included a visit to the Queensland Art Gallery. As usual it was showcasing some brilliant Indigenous artwork, as well as some interesting self-portraits and a selection of Australian paintings from its permanent collection.

We then started on our return journey via lovely seaside towns and finished up in Canberra for a day, where, as you might guess, we visited the National Gallery. After paying the usual homage to Blue Poles, we wandered around the current feature exhibition called "Know my Name". This showed works by Australian women artists from the 1920-40 period, such as Grace Cossington Smith, Margaret Preston and Ethel Spowers. There were many impressive lino cuts and other types of printing, plus the more usual mediums, including photography. (Olive Cotton featured.)

In those days, women Artists struggled to achieve the same recognition as their male counterparts.

Preparations are under way for our next exhibitions, which promise to be varied and interesting.

We have had quite a few queries as to the possibility of more Café Culture type evenings. As we must find suitable acts, it is possible that we may only be able to have two performances each year. Many thanks to Yvette and Jenny who have been doing the investigation for such performances. Hopefully there may be something in the wind for later this year.

Cheers, Steve

Bright Art Gallery & Cultural Centre Committee

Inc A9293R

President: Steve McCall (Autumn Art Exhibition Coordinator)

Treasurer: Jon Lilley

Vice President: Roy Ward (Assets & Council Liaison)

Association Secretary: Kitty Knappstein

Committee: Pauline McCall (Secretary), Tatjana Filicin (Membership Secretary), Annemarie Wiegerinck (Exhibitions Coordinator & Newsletters), Kim Robinson (Volunteer Coordinator), Barry Willcox, Yvette Van Urk (Grants), Jenny McNaught, Kay Gillis (Permanent Collection Curator), Carol Styles (Social Media). Plus, until the next AGM we have two new co-opted members Renata Armishaw and Libby Owen-Jones (Gallery Shop Coordinator).

Contact: manager@brightartgallery.org.au - 03 5750 1660 - PO Box 216, Bright Vic 3741

28 Mountbatten Ave Bright – www.brightartgallery.org.au

After hours phone numbers: Steve & Pauline 0429 127 444; Kim 0427 637 269; Annemarie 0413 247 237